
DEFENDER PROTM GUIDELINE DEVICES



OWNER'S MANUAL



CONTACTING HALCYON

Halcyon Manufacturing, Inc.
24587 NW 178th Place
High Springs, Florida 32643
www.halcyon.net

386.454.0811
800.HALCYON
386.454.0815 (fax)
info@halcyon.net

HALCYON DEFENDER PRO™ OWNER'S MANUAL

Trademark Notice

Halcyon® and BC Keel® are registered trademarks of Halcyon Manufacturing, Inc. Halcyon's BC Keel and Trim Weight systems are protected by U.S. Patents #5855454 and #6530725b1. The Halcyon Cinch is a patent-pending design protected by U.S. and European law. Halcyon trademarks and pending patents include: Multifunction Compensator™, Cinch™, Pioneer™, Traveler™, Eclipse™ wings, Explorer™ wings, Evolve™ wings, BC Storage Pak™, Active Control Ballast™, Diver's Life Raft™, Surf Shuttle™, No-Lock Connector™, Helios™ lighting system, Proteus™ lighting system, Apollo™ lighting system, Scout Light™, Pathfinder™ reels, Defender™ spools, and RB80™ rebreather.

Copyright Notice

This owner's manual is copyrighted, all rights reserved. It may not, in whole or in part, be copied, photocopied, reproduced, translated, or reduced to any electronic medium or machine-readable form without prior consent in writing from Halcyon Manufacturing, Inc.

©2012 Halcyon Manufacturing, Inc.

TABLE OF CONTENTS

CONTACTING HALCYON	2
HALCYON DEFENDER PRO™ GUIDELINE DEVICES	5
OPERATIONAL GUIDELINES	7
DEFENDER PRO™ SPOOLS	8
ASSEMBLY AND DISASSEMBLY OF THE DEFENDER PRO™	9
USING THE EASYGRIP™ ADAPTOR	10
HALCYON DEFENDER PRO™ 200	11
ASSEMBLY AND DISASSEMBLY OF THE DEFENDER PRO™ 200	12
ADDITIONAL FEATURES	16

HALCYON DEFENDER PRO™ GUIDELINE DEVICES

The new Halcyon Defender Pro™ series of guideline devices expands upon the time-tested utility of Halcyon Defender™ spools and the proven functionality of Halcyon Pathfinder™ reels by providing enhanced flexibility and unique operational advantages.



Defender Pro™ spool series



Defender Pro™ 200

The Halcyon Defender Pro™ utilizes a unique, solid center that is designed to accommodate a fully operational spindle, converting the Defender Pro™ from a simple spool to a unique hybrid design. This new design utilizes Halcyon's innovative EasyGrip™ adaptor, converting your double-end clip into a solid handle. The EasyGrip™ adaptor can be locked in place or released to provide full reel-like functionality. Meanwhile, the Defender Pro™ 200 also includes a full-featured Pathfinder™-style handle, allowing three modes of operation (spool, reel, and hybrid).



Defender Pro™ 200



Defender Pro™ 150 reel with EasyGrip™ adaptor

OPERATIONAL GUIDELINES

The Halcyon Defender Pro™ is available in 100-, 150-, and 200-ft sizes (30m, 45m, 60m). Each of these sizes may be used with the universal EasyGrip™ adaptor. When using the 200ft (60m) design with the EasyGrip™ adaptor, you must adjust the lock-screw position to match the holes in the Defender Pro™ spool. The 200ft (60m) Defender Pro™ can be used with a Pathfinder™-style handle or the EasyGrip™ adaptor; it may also be used without any fixtures like a conventional Defender™ spool.



Defender Pro™ family



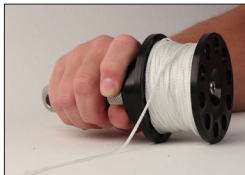
Defender Pro™ 200 reel

DEFENDER PRO™ SPOOLS

The Defender Pro™ spools are typically purchased with the EasyGrip™ adaptor. This adaptor accommodates the included double-end clip, providing a sturdy and convenient handle. The EasyGrip™ adaptor can be fixed so that it will not turn or be allowed to spin freely. You should experiment to decide the best method of operation depending upon the way you will use your Defender Pro™. For example, you might allow the spool to spin freely while deploying an SMB and lock the EasyGrip™ adaptor while holding your position or winding line on the Defender Pro™ spool.



Halcyon Defender Pro™ with EasyGrip™ adaptor



Using the EasyGrip™ adaptor

ASSEMBLY AND DISASSEMBLY OF THE DEFENDER PRO™

You can easily adjust the Defender Pro™ to accommodate your preferred use. Use a 5/32"- or 4mm-size Allen® wrench in order to install the EasyGrip™ adaptor. Please be sure to tighten the spindle so that it does not come free from the EasyGrip™ adaptor. The spindle can easily be unscrewed and removed, leaving the bare spool available for classic operation. When removing the EasyGrip™ adaptor, use the same 5/32"- or 4mm-size Allen® wrench.



Defender™ spool with EasyGrip™ adaptor



Removal/replacement of the EasyGrip™ adaptor

USING THE EASYGRIP™ ADAPTOR

Halcyon's innovative EasyGrip™ adaptor is ideal for situations in which divers need a better grip on their spool. For example, divers deploying an SMB might like a better grip; divers using gloves might also struggle to keep their fingers out of the way while winding a classic Defender™ spool. The EasyGrip™ adaptor is also convenient for use when unwinding line, such as while deploying an SMB or while running a longer jump in a cave-diving situation. Divers should practice the use of the EasyGrip™ lock-down screw as they may wish to allow the spool to spin freely in some situations and to prevent its movement in other scenarios.



EasyGrip™ in action

HALCYON DEFENDER PRO™ 200

The Halcyon Defender Pro™ 200 is a unique guideline device combining the powerful utility of the Halcyon Pathfinder™ reel with the elegant simplicity of the Halcyon Defender™ spool. The Defender Pro™ 200 can rapidly be converted from a Pathfinder™-style reel to a Defender™-style spool, including all the benefits of the revolutionary Defender Pro™ EasyGrip™ adaptor.



Defender Pro™ 200

ASSEMBLY AND DISASSEMBLY OF THE DEFENDER PRO™ 200

You can easily adjust the Defender Pro™ 200 to accommodate your preferred use. Use a 5/32"- or 4mm-size Allen® wrench to remove the handle. (Figure 1)



Fig. 1

You must remove the winding knob in order to use the Defender™ 200 as a bare spool or with the EasyGrip™ adaptor. In order to remove the winding knob, you must remove some line from the spool. Unwind the line, being careful not to create a tangle. Use a Phillips screwdriver to remove the knob and push the winding rod through the spool. (Figure 2)



Fig. 2

Be sure to store your winding knob on the handle of the spool as shown in Figures 3 and 4.



Fig. 3



Fig. 4

When installing the EasyGrip™ adaptor, use the same 5/32"- or 4mm-size Allen® wrench. Please be sure to tighten the spindle so that it does not come free from the EasyGrip™ adaptor. (Figure 5)



Fig. 5

ADDITIONAL FEATURES



The 200 is easily used as a bare spool.



The 200 is only slightly larger than the 150.



Curved to fit a Scout™ light



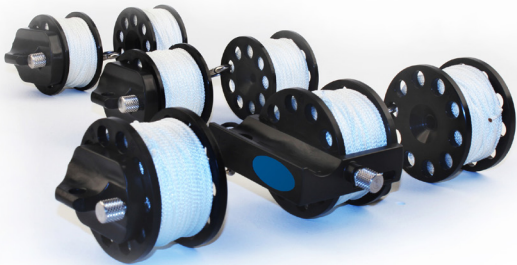
Raised retainer prevents slipping



Retainer prevents line from slipping on spool.



Easily fits a Mini-Explorer™



Defender Pro™ family of spools

